

**OFF-HOLLYWOOD FILMS LLC**

LOS ANGELES – MEXICO CITY

[WWW.OFF-HOLLYWOODFILMS.COM](http://WWW.OFF-HOLLYWOODFILMS.COM)

**WWW.LAFILMBOUTIQUE.COM**

COMING SOON !

**CINEMA EQUIPMENT LIST**

**2016**

# OPTICS

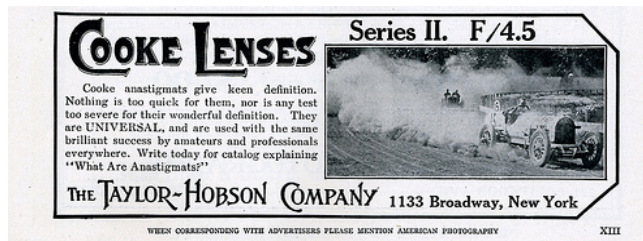
**BOUTIQUE**

**VINTAGE      &      MODERN**

**SPHERI**

**CAL**

**CIRCA** 1940's -1950's



**HOLLYWOOD'S MOST BEAUTIFUL AND LEGENDARY VINTAGE LENSES, HIGHLY REGARDED BY VITTORIO STORARO, STANLEY KUBRICK AND MANY OTHERS. WITH THE CLASSIC, SOFT BUT YET CONTRASTY, WARM AND SEXY COOKE LOOK. THIS SET IS TOP NOTCH NOTHING FAR FROM COOKE S4's and with a vintage touch.**

## **COOKE SPEED PANCHRO REHOUSED TLS SET**

**10 LENS SET Series 3 /Series 2**

**18MMf: 2.3 25MM, f:2.3 32MM, f:2.3 40MM, f2.3, 50MM f: 2.3 75MM f.2.3 100MM f: 2.3 DEEP FIELD PANCHRO, 152MM f: 3.2 203MM f:4 & 317MM COOKE TELEPANCHRO LENSES**

**A UNIQUE VINTAGE PRIME LENS SET READY FOR MODERN USE WITH A MATCHING ZOOM**



**CIRCA** 1940'S -1950'S



**HOLLYWOOD'S MOST BEAUTIFUL AND LEGENDARY VINTAGE LENSES, HIGHLY REGARDED BY VITTORIO STORARO, STANLEY KUBRICK AND MANY OTHERS. WITH THE CLASSIC, SOFT BUT YET CONTRASTY, WARM AND SEXY COOKE LOOK. THIS set is unique, compact, lightweight and has macro features !**

## **COOKE SPEED PANCHRO REHOUSED P+S SET**

10 LENS SET Series 3 /Series 2

18MMf: 2.3 25MM, f:2.3 32MM, f:2.3 40MM, f2.3, 50MM f: 2.3 75MM f.2.3 100MM f: 2.3 DEEP FIELD PANCHRO, 152MM f: 3.2

**A UNIQUE VINTAGE PRIME LENS SET READY FOR MODERN USE WITH A MATCHING ZOOM**

**CIRCA** 1950'S-1970'S

**BAUSCH  
& LOMB**



**HOLLYWOOD'S MOST CLASSIC LENSES. SOME SAY THE MOST BEAUTIFUL LENSES EVER MADE AND THE PERFECT MATCH FOR CAUCASIAN SKIN, GOOD CONTRAST WARM TONES AND AMAZING FLARES. A SET OF THESE LENSES WERE USED ON THE EPIC GODFATHER MOVIE SAGA SHOT BY GORDON WILLIS.**

## **SUPER BALTAR SET**

**7 LENS SET Series 3 /Series 2**

**20MMf: 2.3 25MM, f:2.3 32MM, f:2.3 40MM, f2.3, 50MM f: 2.3 75MM f.2.3 100MM f: 2.3 + 152MM 2.8**

**A ONE OF A KIND LENS SET FOR THAT SPECIAL LOOK**

**CIRCA** 1980's



## **COOKE 25-250MM T 2.5 MK1 (RARE)/MK2**

**THE FIRST VERSION OF THIS ZOOM THE SUPER CINE VARTAL f:2.8 MK1, WAS FIRST INTRODUCED FOR THE SHOOT OF THE MOVIE SUPERMAN IN THE 70'S. THE MK2 VERSION WITH BEAUTIFUL COATINGS, ENHANCED FLARES SHORTLY FOLLOWED, A PERFECT MATCH FOR OUR LOVELY VINTAGE COOKE SPEED PANCHRO LENSES.**

**A MATCHING FULL RANGE ZOOM WORTH THE WEIGHT AND THE PRICE**

**CIRCA** 1970's

**Canon**

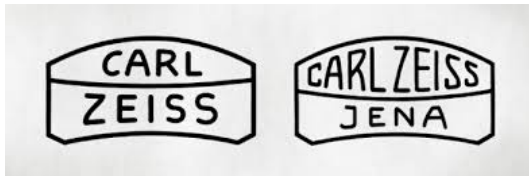


# CANON K35 SUPERSPEED LENSES

18MM 1.5, 24MM 1.3, 35MM 1.3, 50MM 1.3, 85MM 1.3 ( 2 SETS AVAILABLE)

**SMALL, COMPACT AND HIGHSPEED WITH AN OUTSTANDING BEAUTIFUL IMAGE, USED IN MOVIES LIKE DEREK JARMAN'S CARAVAGGIO, BARRY LYNDON, ALIENS AND OTHERS. OUT OF FOCUS HIGHLIGHTS AND UNIQUE ROUND BOKEH AND FLARES MAKES THIS SET UNIQUE. THEY WON A TECHNICAL ACHIEVEMENT ACADEMY AWARD IN 1977 FOR A REASON, THEY STILL KICK ASS.**

**CIRCA** 1975-1990's



# ZEISS SUPERSPEED MK3 SET

5 LENS SET

18MM F1.3, 25MM F1.3, 35MM F1.3, 50MM F1.3, 85MM F1.3

**THE ZEISS LEGENDARY LOOK IN FAST, COMPACT AND LIGHTWEIGHT LENSES, AMAZING FLARES, NEUTRAL COLOR TONES AND DREAMY BOKEH. VERY POPULAR FOR MUSIC VIDEOS, NARRATIVE FILMS COMMERCIALS. EVERYONE FROM A STUDENT FILMMAKER TO MARTIN SCOSERSE STILL USE THEM TODAY. THEY ARE INDUSTRY WORKHORSE FOR A REASON.**

# MODERN PRIMES



## ARRI ZEISS MASTER PRIMES

**THE WORK OF ART OF THE CENTURY IN TERMS OF MODERN GLASS, FAST, RAZOR SHARP AND VIRTUALLY NO BREATHING.**

**A SET OF ONE OF THE VERY BEST MODERN GLASS**

**6 LENS SET**

**18MM F1.3, 25MM F1.3, 35MM F1.3, 50MM F1.3, 75MM F1.3, 100MM F.13**

**\* AVAILABLE ONLY ON REQUEST**



# LIGHTWEIGHT ZOOMS

**angēnieux**

## ANGENIEUX OPTIMO



**F: 2.8      16-42 MM / 15 - 40      MM**

## ANGENIEUX OPTIMO



**F: 2.8      30-80 MM / 45 - 120      MM**

**ANGENIEUX WA 0.75 X WIDE ANGLE ADAPTER**

**CONVERTS 15-40/16-42 ZOOM TO 11MM-12MM**

**ANGENIEUX LEGENDARY ZOOMS WITH THEIR PRIME LIKE QUALITY**



**ANAMO**

**RPHICS**



**CIRCA** 1970's



**THESE 2X SQUEEZE LENSES ARE THE HIGHLY SOUGHT-AFTER JAPANESE CINEMA LENSES OF THE 1970'S. PRODUCING A 2:39:1 CINEMASCOPE, THEY ARE LOW IN CONTRAST, WARM IN COLOR WITH THAT LOOK OLD ANAMORPHIC CLASSIC FLARES AND YET GOOD AMOUNT OF SHARPNESS ON TODAY'S DIGITAL SENSORS. ONCE YOU SEE THROUGH THE ANGLE OF VIEW OF AN ANAMORPHIC SCOPE IS HARD TO GO BACK. VERY POPULAR FOR MUSIC VIDEOS AND NARRATIVE FILMS.**

## **KOWA ANAMORPHIC SET ( LIGHTWEIGHT, COMPACT, UNIQUE )**

4 LENS SET (2 sets available)

40MMf: 2.3 (+30MM WIDE ANGLE ADAPTER), 50MM, f:2.3 75MM, f:2.8 100MM, f3.4

**HARD TO BEAT THE LOOK OF ANAMORPHIC AND THESE AMAZING FLARES**

**CAMER**  
**AS**

## 2x ARRI – ALEXA MINI

HD-2.8K 3.2K ULTRA HD LOG - C SUPPORT

16:9 4:3 S35MM CMOS SENSOR

PRO RES PRO RES XQ / ARRIRAW 422 / 444 12 BITS 1-200 FPS

## 2X SONY PMW FS7

HD-2K 4K ULTRA HD LOG - C SUPPORT

16:9 4K S35MM CMOS SENSOR

XAVC / PRO RES 422 422 16 BITS 1-200 FPS

## CANON 5D MARK III

HD - JPEG - CR.2 TECHNICOLOR CINESTYLE

S35MM FULL FRAME SENSOR

MPEG 4 8 BITS 1-60 FPS

**ARRI ALEXA MINI**

**[ 16:9, 4:3 ARRIRAW ]**

**ARRI®**

**1-200 fps  
444**

**ANAMORPHIC**

**3.2K 2.8K HD 422/444**



**ARRIRAW and Anamorphic 4:3 modes are included as standard with the package and we have up to 4 packages available upon request.**

## **PACKAGE INCLUDES :**

**-1 ARRI ALEXA MINI BODY WITH TITANIUM PL MOUNT ADAPTER WITH L-BUS AND ALEXA MINI VIEWFINDER**

**-1 ARRI ALEXA MINI FULL ACCESSORY CUSTOMIZED KIT WITH INNERSPACE CASE**

- 1X K2.0006140 MVB-1, VIEWFINDER MOUNTING BRACKET FOR ALEXA MINI
- 1X ARRI CANON EF MOUNT ADAPTER FOR ALEXA MINI (WITH POSITIVE LOCK, NO SHIMMING NEEDED)
- 2X K2.0006334 MAP-1, LIGHTWEIGHT ADAPTER PLATE FOR ALEXA MINI
- 2X K2.0006347 MAP-2, ADAPTER PLATE WITH ROD SUPPORT FOR ALEXA MINI
- 2X K2.0006348 MSB-1, SIDE BRACKET FOR ALEXA MINI
- 1X K2.0006352 BPA-4, BRIDGE PLATE ADAPTER FOR ALEXA MINI
- 2X K2.0006186 RMB-3, ROD MOUNTING BRACKET
- 2X K2.66255.0 15MM REDUCTION INSERT FOR RMB-3
- 1X K2.73002.0 CCH-2, CENTER CAMERA HANDLE
- 1X SET K2.66252.0 SUPPORT RODS 340 MM (13.4"), 15 MM
- 1X K2.0006471 BAP-1, BATTERY PLATE
- 1X K2.0006471 BAP-2, SIDE BATTERY PLATE
- 1X K2.0006807 CSP-1, SHOULDER PAD
- 1X K2.72021.0 KC 153-S, ETHERNET/RJ-45 CABLE (3.00M/9.8FT)
- 1X K2.75007.0 KC-50, POWER CABLE STRAIGHT (2M, 6.6 FEET)
- 1X ARRI K2.0006171 ALEXA MINI AUDIO CONNECTOR W/ CABLE & ARRI K2.66256.0 (K2662560) MBH-1 MICROPHONE BRACKET HOLDER
- 4X K2.0003623 LEXAR 2.0 CARD 256 GB
- 1X K2.0001242 CFAST 2.0 CARD READER USB 3.0 /THUNDERBOLT
- 5X PAG L94T (10A-12A) LIGHTWEIGHT STACKABLE BATTERIES WITH CHARGER
- 1X CUSTOM HAND HELD RIG
- 6X LIGHTWEIGHT 15MM CARBON FIBER RODS ASSORTED SIZES 6", 9" 18"
- 2X STUDIO 19MM ULTRA RODS 24" 18" OR 12"
- 1X TRANSIVIDEO HD 7 INCH RAINBOW ESBL MONITOR
- 1X CAMRADE RAINCOVER WITH 5.6" MONITOR COVER+ EXTENDABLE ZOOM LENS EXTRA COVERS
- 1X MULTID-TAP CUSTOM POWER INTEGRATED SOLUTION

**RED EPIC-M X**

**[ 16:9 REDCODE RAW 3:1 ]**

**1-300 fps**

**5K 2K 4K HD**



**\* AVAILABLE ONLY ON REQUEST**

## **PACKAGE INCLUDES :**

**-1 RED EPIC MX or DRAGON BODY WITH TITANIUM PL MOUNT**

**-1 RED EPIC ELEMENT TECHNICA FULL ACCESSORY KIT**

- 1X- RED EPIC X CAMERA BODY W/ DSMC SIDE SSD MODULE AND ELEMENT TECHNICA SHIM PLATE
- 1X- ELEMENT TECHNICA SLIDING BASEPLATE W/ 15MM OR 19MM RODS
- 1X- RED 5" LCD TOUCHSCREEN
- 1X- RED BOMB EVF
- 1X- REDMOTE
- 2X- REDVOLT BATTERIES AND TRAVEL CHARGER
- 4X- 14.8V 160WH LI-ION BATTERY
- 2X- LI-ION DUAL CHARGER
- 1X- DSMC SIDE HANDLE
- 1X- RED POWER SUPPLY
- 2X- RED SSD DRIVE 256GB
- 1X- RED SSD STATION
- 5X PAG L94T STACKABLE BATTERIES WITH 2 CHARGERS
- 1X ELEMENT TECHNICA HANDHELD RIG
- 6X LIGHTWEIGHT 15MM ULTRARODS ASSORTED SIZES 6", 9" 18"
- 2X STUDIO 19MM ULTRA RODS 24" 18" OR 12"
- 1X TV LOGIC 5.6 INCHES 056W-P ON BOARD MONITOR W/ SUNHOOD, 8 CANON LP-E6 BATTERIES + 4 POSITION CHARGER
- 1X ELEMENT TECHNICA RAINCOVER WITH 5.6" MONITOR COVER+ EXTENDABLE ZOOM LENS EXTRA COVERS.

# **2X SONY PMW FS7 ( 16:9, HD/4K )**

**1-180 fps**

**HD 422/ 4K RAW**





**CANON 5D MARK III ( 16:9, FULL FRAME )**

**Canon**

**1-60 FPS HD - CR.2**



**-FULL TIME LAPSE PACKAGE WITH INTERVALOMETER, 3 CHARGERS, 8 BATERIES AND 3 32 GB SANDISK EXTREME CARDS.**

# ACTION CAMS



## GO PRO HERO 4 BLACK EDITION



**ACCES**

**ORIES**

**FOLLOW**

**FOCUS**



## **FOLLOW FOCUS ARRI FF5 CINE PRO KIT**

- 1x FF-5 Cine base (K2.65246.0)
- 1x Focus knob standard left (K2.65253.0)
- 1x Module gear for smaller primes 0,8 (K2.47252.0)
- 1x Module gear for larger primes 0,8 (K2.47002.0)
- 1x Customized Pelican Case



## **FOLLOW FOCUS ARRI MFF-2 KIT**

- 1x Mini Follow Focus MFF-2 Cine K2.65255.0
- 1x Focus Knob Standard left K2.65253.0
- 1x Focus Gear 0.8/43 teeth K2.47002.0



## ARRI WCU4 WIRELESS FOLLOW FOCUS CFORCE MINI SET

- 1x K2.72103.0 Wireless Compact Unit WCU-4
- 1x K2.72133.0 Pre-Marked Focus Ring 12"
- 1x K2.72136.0 Pre-Marked Focus Ring 3'6"
- 1x K2.72129.0 Pre-Marked Focus Ring 0.25m
- 1x K2.72132.0 Pre-Marked Focus Ring 1.00m
- 1x K2.72117.0 White Focus Ring
- 1x K2.0006501 WCU-4 Plate
- 3x K2.47851.0 NP-FM500H Batteries (Sony) + BC-QM1 Battery Charger
- 1x K2.0006355 cforce mini (up to 3 Lens Motors)
- 2x K2.0006750 Cable LBUS (0.3m/1ft)
- 1x K2.72146.0 Carrying Case for WCU-4 and accessories

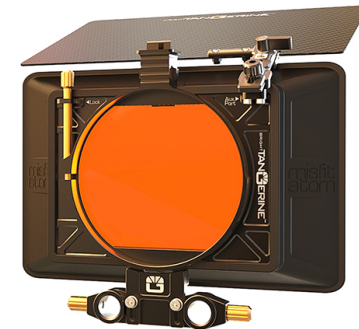
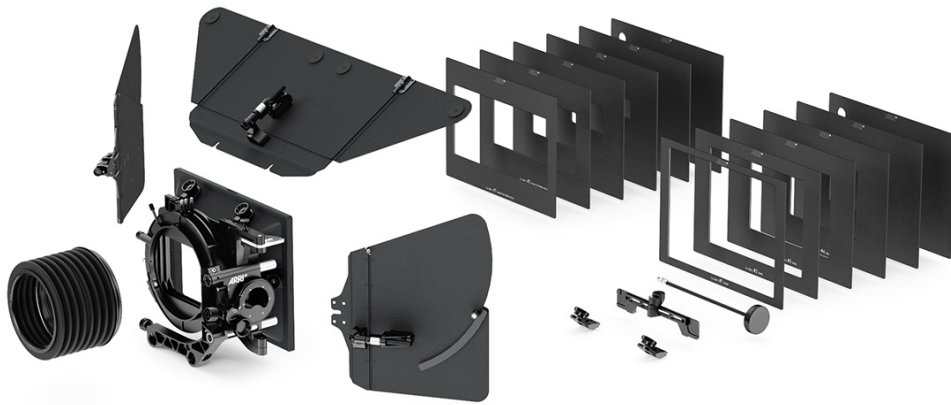
**MATTE**

**BOX**

# ARRI



BRIGHT **TANGERINE**™





# **FILTERS**



- TIFFEN PANAVISION SIZE 4X5.65 IRND HOT MIRROR FILTERS

**.3, .6, .9 y 1.2**





- TIFFEN PANAVISION SIZE 4X5.65 ULTRA POLARIZER





- TIFFEN PANAVISION SIZE 4X5.65 ND DEGRADATED SOFT EDGE HORIZONTAL

**.6. y .9**



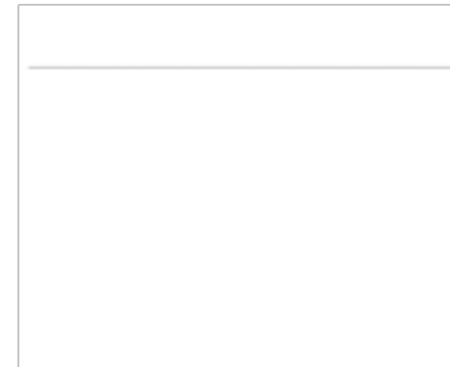


- TIFFEN PANAVISION SIZE 4X5.65 BLACK PROMIST SOFT FX FILTER  
FILTER

1, 1/2, 1/4,



- TIFFEN PANAVISION SIZE 4X5.65 CLEAR



\* ADDITIONAL FILTERS UPON REQUEST

**MONIT**

**ORS**



## **TRANVIDEO RAINBOW HD SBL (SUPERBRIGHT) LIGHTWEIGHT ON BOARD MONITOR**

**SMALL, LIGHTWEIGHT, YET POWERFUL HD 7 INCH MONITOR SOLUTION SYSTEM** WITH HD/SD SDI, HDMI, COMPOSITE I/O BRIGHTNESS OF 950 NITS. FEATURES WAVEFORM, HISTOGRAM, VECTORSCOPE, FOCUS HELPER, PEAKING, ZOOM, MARKERS, ASPECT RATIOS DISPLAY ADJUSTMENTS, ANAMORPHIC SUPPORT.



**WANT TO USE A NICE COMPACT MONITOR UNDER THE SUN CHOOSE THIS ONE**



## **TERADEK BOLT PRO 600 WIRELESS HD-SDI VIDEO TRANSMITTER/RECEIVER SET**



LATENCY FREE WIRELESS TRANSMISSION SYSTEM THAT SENDS 4:2:2, 1080P60 VIDEO UP TO 2000 FT OVER THE UNLICENSED 5GHZ BAND. IT INCLUDES ONE TRANSMITTER AND ONE RECEIVER, BOTH FEATURING 3G-SDI AND HDMI CONNECTIONS. BOTH CAN ALSO BE OUTFITTED WITH HIGH GAIN ANTENNAS FOR INCREASED RANGE AND RESILIENCY.

## **WIRELESS HD MONITORING IS THE BOMB**



**RECOOR**

**DER S**

## GEMINI 4:4:4 RECORDER WITH (4) 512 GB SSDS AND ARRIRAW LICENSE WITH 4:3 ANAMORPHIC CAPABILITIES



## ODDYSEY 7Q+ RECORDER WITH (4) 512 GB SSDS AND ARRIRAW LICENSE WITH 4:3 ANAMORPHIC CAPABILITIES



### BOTH PACAKAGES INCLUDE :

- 2 UNIVERSAL TRANSFER STATIONS WITH SEAGATE THUNDERBOLT ADAPTER
- 1 CUSTOMIZED SIDE MOUNT BRACKET
- 1 SUNHOOD
- 1 ALEXA DC CABLE
- 1 PELICAN CASE WITH ALL FACTORY CUSTOMIZED ACCESORIES

**CAMERA**

**SUPPOR**

**T**

# HEAVY DUTY TRIPODS



## SACHTLER CINE 30 HD [ 150 MM ] HEAD SYSTEM [ FOR CAMERAS UP TO 77.2 LBS ]



INCLUDES : HEAD, PAN BAR, CASE AND NORMAL, BABY AND MINI HEAVY DUTY TRIPODS WITH FLOOR SPREADER.

# LIGHTWEIGHT TRIPOD



## SACHTLER CINE 1973 7+7 HD (100 MM) HEAD SYSTEM ( FOR CAMERAS UP TO 77.2 LBS )



INCLUDES : HEAD, PAN BAR, LIGHTWEIGHT LEGS, CASE AND MID-LEVEL SPREADER.

# MOVI M15 PACKAGE



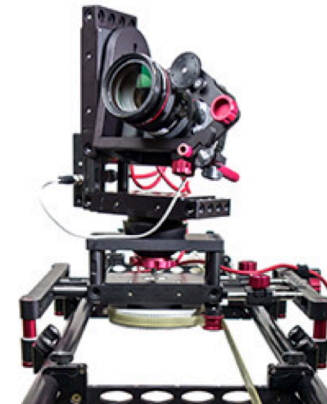
\* Available with Easyrig gymbal rig, inovativ camera kart and full wireless HD/ follow focus kit.

# PORTABLE DOLLY



## CAMBLOCK DOLLY MODULAR V2.

**HOT HEAD SYSTEM** **MOTION CONTROL PORTABLE DOLLY**  
**[ FOR CAMERAS UP TO 77.2 LBS ]**



- MOTORIZED 6 AXIS HEAD WITH MOTORS (TILT, PAN, DOLLY, ROLL 360°, FOCUS, IRIS) FOR LIVE MOVES AND MOTION CONTROL APPLICATIONS CONTROLLED VIA A TABLET APP OR A JOYSTICK CONTROL ( CAMERA UNDERSLUNG FEATURE ENABLED )
- 22 FT OF CARBON FIBER TRACKS THAT CAN BE EXTENDED AS LONG AS YOU NEED FOR MOVES HORIZONTALLY OR VERTICALLY
- SMALL, PORTABLE AND DOES EVERYTHING FROM SIMPLE MOVES & TOP SHOTS TO COMPLICATED PROGRAMABLE MOVES
- MOUNT ANY CAMERA FROM A DSLR ALL THE WAY TO A PHANTOM CAMERA ( FAST DOLLY FEATURE FOR SLOW MOTION MOVES)

**LIGHTI**

**NG**





## **NILA VARSHA /BOXER KIT**

**THE NEW ERA OF STATE OF ART LED LIGHTING, PLUG AND PLAY WITH THESE 800/1200 HMI EQUIVALENT LIGHTS WITH HOLOGRAPHIC LENSES, TUNGSTEN/ DAYLIGHT SETUPS AND THE POSSIBILITY OF PLUGGING THEM EVEN INSIDE A CAR WITH AN INVERTER .**

**AUDIO**



+



+



**SOUND**  **DEVICES**

**3D**  
SOUND RECORDING EXPERIENCE

**SOUNDMAN**

MIKROPHONE



**JUST BECAUSE AUDIO MATTERS TO AND WE LOVE TO NOT ONLY SEE A BEAUTIFUL IMAGE, WE HAVE A FULL AUDIO SETUP WITH GERMAN BINARAU 3D MICS, DIRECCIONAL, OMNIDIRECTIONAL AND LAV MICS.**

**SENNHEISER**  
*defining sound*



+



+



**Rycote**



+



+



**-1 SOUNDEVICES 633 AUDIO RECORDER WITH UP TO 6 AUDIO CHANNELS, AES INPUT, LINE INPUT AND COMPACT FLASH MEMORY CARD DRIVE.**

**-1 BEYERN DYNAMIC PROFFESIONAL FIELD RECORDING MONITORING HEADPHONES WITH PLUG AND MINI PLUG EXTENDABLE CORD.**

**-1 SENHEISSER MK 416 T DIRECTIONAL PATERN SHOTGUN MICROPHONE**

**1- NEUMMAN KM185 MT DIRECTIONAL PATTERN SHOTGUN MICROPHONE**

**-1 RYCOTE WS4 WINDSCREEN KIT**

**\* INCLUDES: PISTOL GRIP, ZEPELLIN, WINDJAMMER, MIC SHOCK MOUNT, TOOLS AND A PORTABLE SOFTIE FOR ON CAMERA MICROPHONES.**

**-1 K-TEC BOOMPOLE WITH INTEGRATED XLR CABLE AND CASE.**

**-1 RAINMAN RAINCOVER FOR ZEPELLIN.**

**-5 NEUTRIC TOP QUALITY XLR CABLES**

**-5 NEUTRIC TOP QUALITY XLR ADAPTERS**

**-1 SET OF POWEREX HIGH END NI-MH RECARGABLE BATTERIES SET OF 12 AA SIZED BATTERIES INCLUDED**

**-1 PINAE SOUNDMMAN DUMMY HEAD FOR AMBIENT RECORDINGS MADE IN GERMANY INCLUDES CUSTOM MADE RYCOTE WINDJAMMER**

**-2 SENHEISSER EW-100 G3 LAVALIER MICROPHONE KIT INCLUDES ALSO ONE SENHEISSER HAND MICROPHONE AND A SKP 100 G3 TRANSMITTER FOR DYNAMIC MICROPHONES WITH 2 XLR CABLES.**

## **BINAURAL MICROPHONES**



**-1 SOUNDMAN CXS CLASSIC STUDIO VERSION BINAURAL MIC SET (MADE IN GERMANY)**

**-1 SOUNDMAN CX CLASSIC VERSION BINAURAL MIC SET (MADE IN GERMANY)**

**-1 SOUNDMAN POP/AV VERSION BINAURAL MIC SET (MADE IN GERMANY)**

**-1 SOUNDMAN ROCK VERSION BINAURAL MIC SET (MADE IN GERMANY)**

**POSTPRO  
DUCTION**

Sony Digital Cinema™  
**4K**



**FULL SERVICE ON LOCATION + EDITING & COLOR CORRECTION**

**7.1 DOLBY AUDIO SET UP WITH 4K PROJECTION**

# OFF-HOLLYWOOD FILMS LLC

LOS ANGELES, USA - MEXICO CITY

**GEORGINA GONZALEZ**

**PRODUCER**

[http://www.imdb.com/name/nm3048578/?ref=ttfc\\_fc\\_cr4](http://www.imdb.com/name/nm3048578/?ref=ttfc_fc_cr4)

**RODRIGO ITURRALDE**

**DIRECTOR / CINEMATOPHAGER**

[http://www.imdb.com/name/nm2669534/?ref=fn\\_al\\_nm\\_1](http://www.imdb.com/name/nm2669534/?ref=fn_al_nm_1)

**ERNESTO JOVEN**

**DIT/ COLOR CORRECTION SPECIALIST**

[http://www.imdb.com/name/nm5632029/?ref=fn\\_al\\_nm\\_1](http://www.imdb.com/name/nm5632029/?ref=fn_al_nm_1)

538 MONTEVISTA AVE GLENDALE, CA U.S.A, 91202 LOS ANGELES AREA.

WEBSITE : WWW.OFF-HOLLYWOODFILMS.COM

E-MAIL : INFO@OFF-HOLLYWOODFILMS.COM

TEL +1 (818) 445-49-86 / +1 (818) 478-07-82